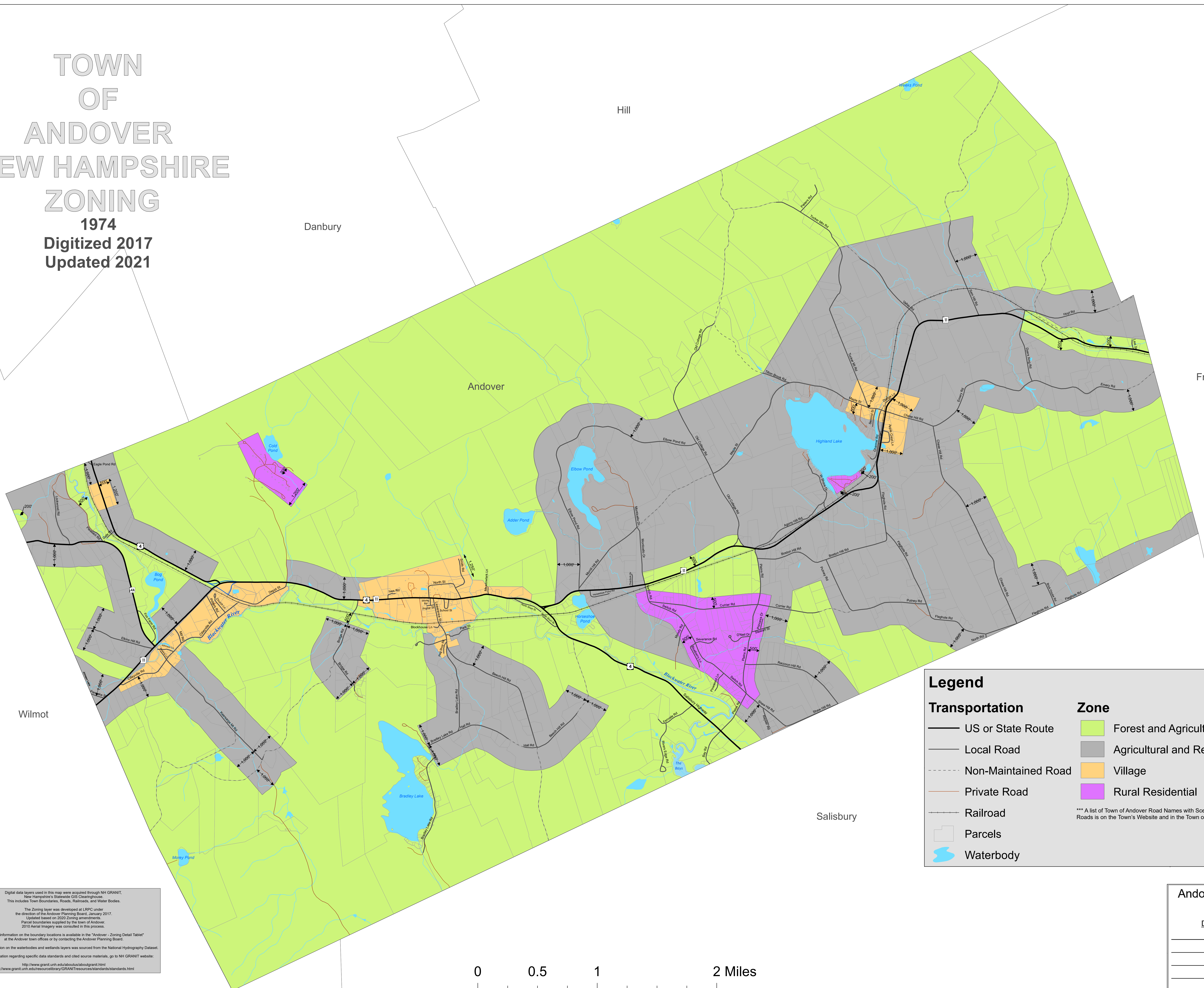
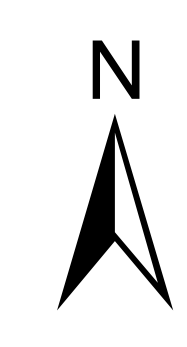


TOWN OF ANDOVER NEW HAMPSHIRE ZONING 1974 Digitized 2017 Updated 2021



Legend

Transportation	Zone
US or State Route	Forest and Agriculture
Local Road	Agricultural and Residential
Non-Maintained Road	Village
Private Road	Rural Residential
Railroad	
Parcels	
Waterbody	

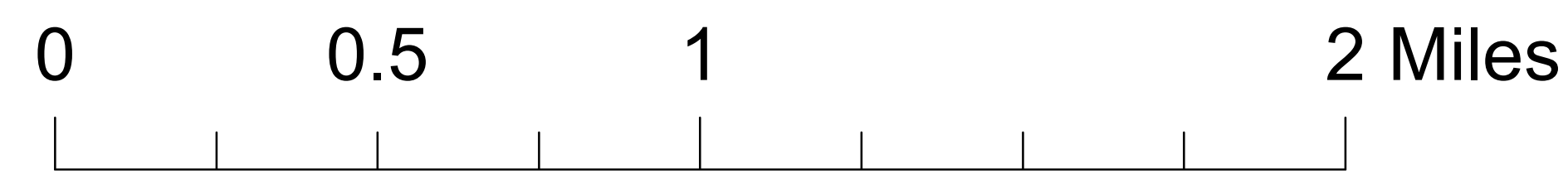
*** A list of Town of Andover Road Names with Scenic and Private Roads is on the Town's Website and in the Town offices.

Digital data layers used in this map were acquired through NH GRANIT, New Hampshire's Statewide GIS Clearinghouse. This includes Town Boundaries, Roads, Railroads, and Water Bodies.

The Zoning layer was developed at LRPC under the direction of the Andover Planning Board, January 2017. Updated based on 2020 Zoning amendments. Parcel boundaries supplied by the town of Andover. 2010 Aerial Imagery was consulted in this process.

Additional information on the boundary locations is available in the "Andover - Zoning Detail Tablet" at the Andover town offices or by contacting the Andover Planning Board.

Additional information regarding the waterbodies and wetlands layers was sourced from the National Hydrography Dataset. For more information regarding specific data standards and cited source materials, go to NH GRANIT website: <http://www.granit.unh.edu/resources/standards/standards.html>



Andover Planning Board

Date: _____

